



PO BOX 57 BALMAIN 2041

NEXT MEETING: 6 JUNE
7 30 PM WATCH HOUSE 179 DARLING ST

Uncovering Our Past



PETER REYNOLDS

JUNG'S BAKERY: 210 DARLING STREET

Along Darling Street from Stephen Street to Ann Street is a group of interesting buildings.

On the corner of Stephen Street is Dickson's chemist's shop, next four terrace houses built about 1912, next two stone shops (206-208), then the old bakery (210) and then the former Albion Hotel on the corner of Ann Street.

The stone building (206-208) was built as two shops about 1855 by Michael Hyland, a Balmain developer. Good quality stonework on the street front supported a cantilevered balcony on to which the upstairs rooms opened.

The upstairs doors have since been bricked up and the balcony sawn off.

No 206 was a tobacconist's at the beginning of the century and 210 was Lown's grocer's shop. Andrew Thomas Lown bought the property in 1891.

Jung's Bakery (210) was built at about the same time as the grocery next door (206-208).

Leopold Theodore Jung was born in Kirn, Prussia, in 1816. His family moved to London about 1820 where he was apprenticed to a baker and pastrycook between 1832 and 1838.

In 1846 Leopold Jung married Penelope Whelan and sailed to Sydney in the same year aboard the Parnell. Penelope was a London girl born of Welsh parents.

After settling in Balmain Jung built the two storey stone bakery with shop fittings of cedar, four bedrooms upstairs and with the stone bakehouse at the rear.

He bought a narrow strip of land fronting Ann Street to give access to the bakehouse for fuel and flour deliveries: The flour was stored in a weather-board loft above the bakehouse. The loft extended to the upper storey of the house.

Leopold and Penelope had five children at the bakery: Leopold Theodore junior (b 1854), Annie (m Bobardt), Mary Ann (m Cox), Louis John Joseph (b 1864) and Christian George (b 1867).

Leopold junior was apprenticed to his father and took over the business when his father retired in the 1880s. Not being keen on the bakery trade, Leopold sold the business in 1888 and bought a dairy at Tomerong. In about 1905, he moved to Tregeagle, near Lismore, and raised a family of five sons and five daughters.

Leopold senior built a "palatial home" in Louisa Road which had a vast glasshouse. The glass imported from England cost £8 000. (Does anyone know the whereabouts of the house?)

He had been an early alderman on Balmain Council and one of the trustees of the Working Men's Institute. He died at the Louisa Road house in 1892.

The second son, Louis John Joseph Jung, married Cecelia Violet McCleer (b 1872) - McCleer Street, Rozelle is named after her family. Their children were John Edmund (born on the last day of 1899), Annie Cecelia (b 1901), Mildred Rose (b 1907) and George Henry (b 1907). All the children were born at the bakery.

On the bakery shopfront was a two-storey verandah which covered the full width of the footpath. The upstairs doors opened on to it and it was a secret way used by the children of getting out by sliding down the verandah posts. The wide verandah of the Albion Hotel (then O'Dell's grocer's shop) next door stopped short of Jung's verandah but sometimes the children got stuck between the posts and had to be rescued.

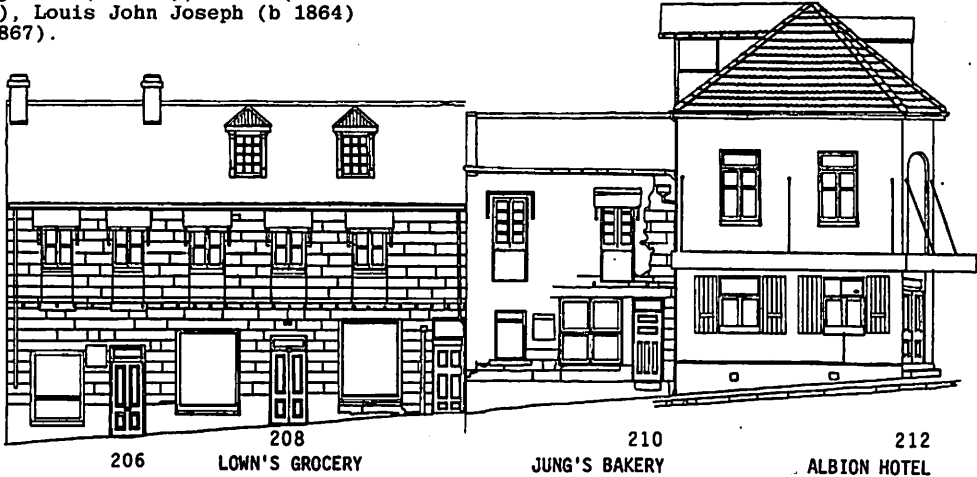
Louis Jung was a clerk in the Balmain New Ferry Co's office and it was his job to count the takings. In his day the pennies were too numerous to be counted and were scooped up and weighed.

After Louis' accidental death in 1921 the family moved to Gladesville and the bakery premises were sold.

Jung's Bakery, the old Albion and Nos 206-208 all await sympathetic renovation.

206-212 DARLING STREET
(Drawn by G Modra UNSW)

Cement coating on Bakery wall peeling away to reveal original stonework. Walls of the old Albion Hotel coated with modern textured render.



206 LOWN'S GROCERY 208 LOWN'S GROCERY 210 JUNG'S BAKERY 212 ALBION HOTEL

LETTERS TO THE COUNCIL ABOUT CLONTARF

Sir, CLONTARF OPEN SPACE 3.5.83
I am directed to convey to you the Resolution carried at the Meeting of the Committee of Management of the Balmain Association held at the Watch House, 179 Darling Street, Balmain on 2 May 1983.

The Resolution is as follows:

Whereas the Balmain Association must not be silent where there is evidence of resumption of Open Space. BE IT RESOLVED that Leichhardt Council be informed that the Balmain Association is most disappointed that the assurances that Open Space around Clontarf would be preserved as parkland have been broken by Council.

FURTHER the proposed number of units has been increased from 16 to 22, with car accommodation for only three vehicles, and, as stated in the Director of Planning Report date 1 Feb. 1983 ref DA 304/82, Council can give no guarantee that population densities will not exceed Council recommendations of 150 persons per hectare.

The Balmain Association also understands that Council have no control over Balmain aged residents being given preference over other welfare recipients.

The saving of parkland is not seen as detrimental to a policy favouring the housing of aged people. CARRIED.

Yours faithfully,

Patricia Ryan, Member, Management Committee

Sir, AGED PERSONS' UNITS ON THE SITE OF CLONTARF 5.5.83

As a resident of Balmain I wish to support Council's action in making the Clontarf site available to the Housing Commission for a low-density development as aged persons' housing, subject to appropriate environmental controls and the proper conservation of the old house.

I do not believe that a majority of people who live in this part of Balmain oppose the current proposal in principle; certainly until now I have been silently content to let the Council do its job, and I believe a great number of other residents are similarly disposed.

While it is true the Municipality as a whole is short of public open space, the area in easy reach of the Clontarf site is fairly well endowed with park land. Many of us perceived the creation of White Bay as a "quid pro quo" for new housing of this special kind on the Clontarf land, and we believe that much of the opposition is ill-placed and selfishly parochial.

My request is that your Council gives consideration to a slight lowering of the proposed density to be permitted on this site, so as not to overpower the old houses in scale. Otherwise, I consider the scheme commendable and have every confidence in the architects appointed.

Yours faithfully,

Robert Irving, Senior Lecturer
School of Architecture, University of NSW.

MANAGEMENT COMMITTEE MEETING 2 MAY 1983

CORRESPONDENCE RECEIVED:

- 1 F Dickson, Texas, USA, re our publications for sale.
2 Prof D B Waterson, in reply to ours of 31 March.
3 R D Mack encl cheque for Half a Thousand Acres.
4 Clontarf Park Action Group.
5 B Waterman re Queens Place.
6 J McMahon encl cheque for cost of framing portrait of her mother.

CORRESPONDENCE SENT:

- 7 Replies to above.
8 Historical Officer, Australia Post re foundation stone of Rozelle Post Office.

GENERAL BUSINESS:

9 Clontarf Park Action Group. Resolved that Association write to Council supporting opposition to use of open space for aged persons units on Clontarf site. Question put and passed by Management Committee, Ayes 4, Noes 1, abstained 1. P Reynolds was the sole dissenting voice. Letter so resolved to be signed by a member of the Management Committee and presented to Council at its meeting on 3 May. Meeting closed 10 15 pm: next meeting 6 June at the Watch House.

MANAGEMENT COMMITTEE POSITIONS VACANT

All Management positions will be declared vacant in August 1983. Members are urged to consider the following: Peter Reynolds is taking one year's leave of absence and cannot stand for President; the present News Sheet Editor is also taking a year off; a Minute and Correspondence Secretary is needed now; a Membership Secretary (to keep the subscription list up to date) is also needed right away.

Come to the monthly meeting and volunteer - most of the present Committee have been at it for the past three years straight and need a break - see what you can do!

WATCH THESE DATES

1983 MEETINGS DIARY*****
To simplify arrangements for Management Meetings, General Meetings and History Meetings, one meeting combining all these functions will be held on the first Monday of each month - except public holidays.

Table with 2 columns: Date and Day. Monday 6 June, Monday 4 July, Monday 1 August, Monday 5 September, Tuesday 4 October, Monday 7 November, Monday 5 December. Includes reminder: Remember - first Monday in each month at the Watch House at 7 30 pm. ALL WELCOME*****

JOIN the balmain association

meaning BALMAIN BIRCHGROVE ROZELLE

OUR AIMS ARE TO:

- * improve the living working and recreational amenity of our area
* maintain all features having natural architectural and/or historical value
* compile and record the history of the area/ keep a permanent collection of items of historical interest
* seek the co-operation of everyone concerned in the realization of the above

For further information please contact:

PETER REYNOLDS 827 3560

the balmain association

AMENDED SUBSCRIPTION RATES

MEMBERSHIP FORM (OPEN/RENEW) PO BOX 57 BALMAIN 2041

NAME:

ADDRESS:

TELEPHONE: (HOME) (WORK)

ANNUAL SUBSCRIPTION (including News Sheet delivery in Balmain Birchgrove Rozelle)

Table with 2 columns: Category and Price. Single \$ 4.00, Family or Household \$ 6.00, Pensioner or Student \$ 1.00, Organization \$12.00

DELIVERED FREE IN OUR AREA

Add \$3.00 to above rates to have News Sheet posted. Cheques made payable to "The Balmain Association" 16583